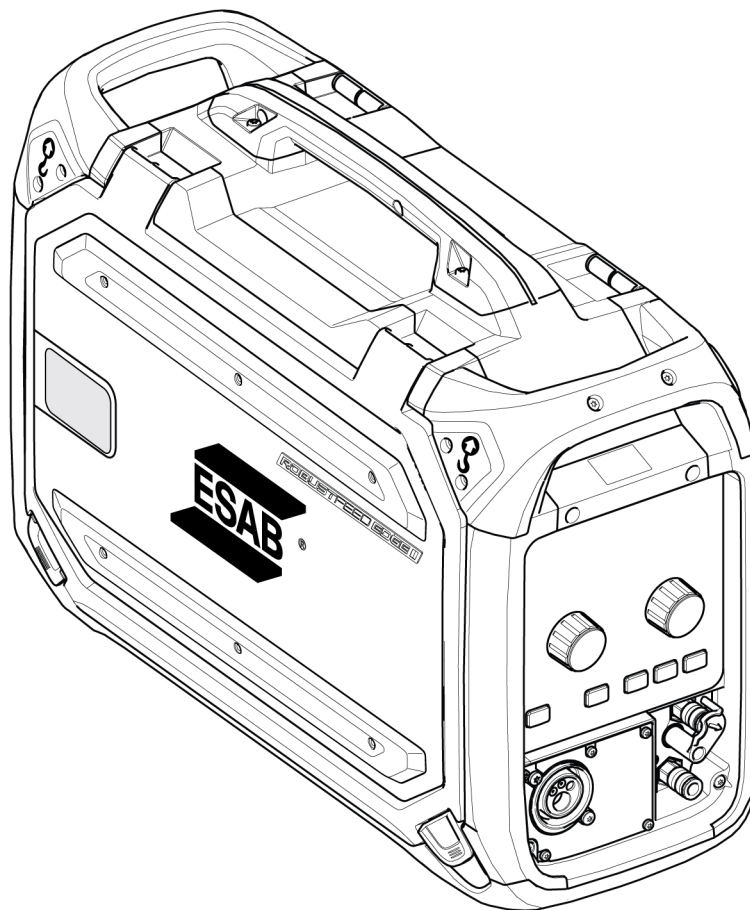


ROBUSTFEED EDGE



Spare parts list

Ordering no.	Denomination	Notes
0446 600 880	RobustFeed Edge BX	With EURO connector, NFC, and torch cooling system
0446 600 881	RobustFeed Edge CX	With EURO connector, NFC, torch cooling system, heater, and digital gas solution
0446 600 885	RobustFeed Edge DX Tweco	With Tweco connector, torch cooling system, NFC, heater, digital gas control and MMA outlet
0463 787 001	Spare parts list	RobustFeed Edge
0463 845 001	Service manual	RobustFeed Edge
0463 773 *	Instruction manual	RobustFeed Edge, CE version
0463 786 *	Instruction manual	RobustFeed Edge, CSA version

The three last digits in the document number of the manual show the version of the manual. Therefore they are replaced with * here. Make sure to use a manual with a serial number or software version that corresponds with the product, see the front page of the manual.

Spare parts may be ordered through your nearest ESAB dealer, see esab.com. When ordering, please state product type, serial number, denominations and ordering numbers according to the spare parts list. This facilitates dispatch and ensures correct delivery.

Maintenance and repair work should be performed by an experienced person, and electrical work only by a trained electrician. Use only recommended spare parts.

For accessories to the product, see the instruction manual.

TABLE OF CONTENTS

Housing module 4

Feeder mechanism module 7

Front and rear interface module 9

Control panels 11

Bobbin holder 13

Water, gas and heat kit modules 15

System control module 18

WEAR PARTS 20

SPARE PARTS

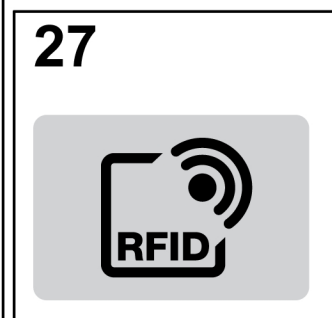
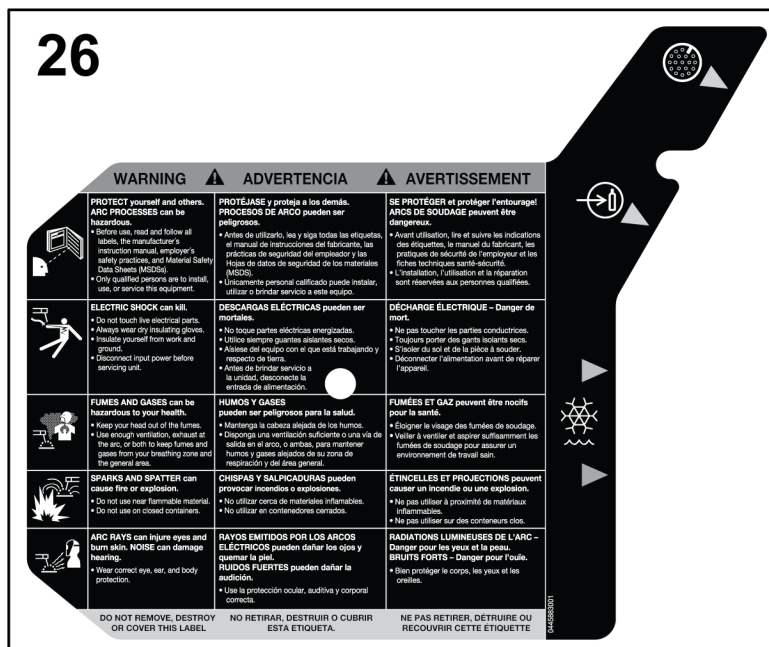
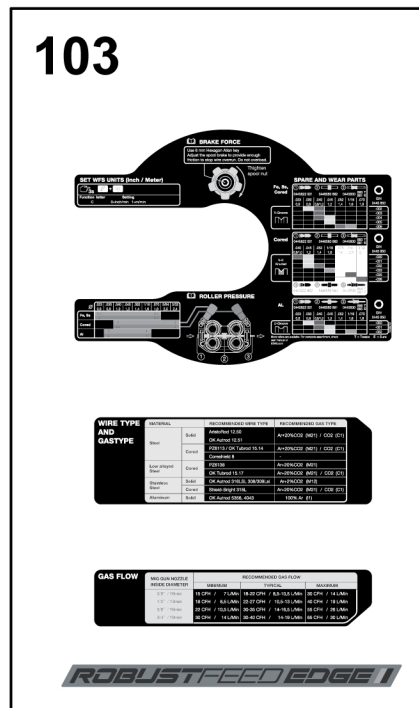
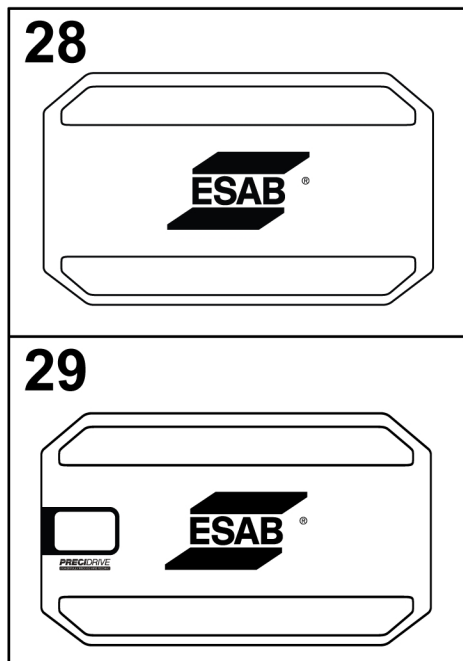
Housing module

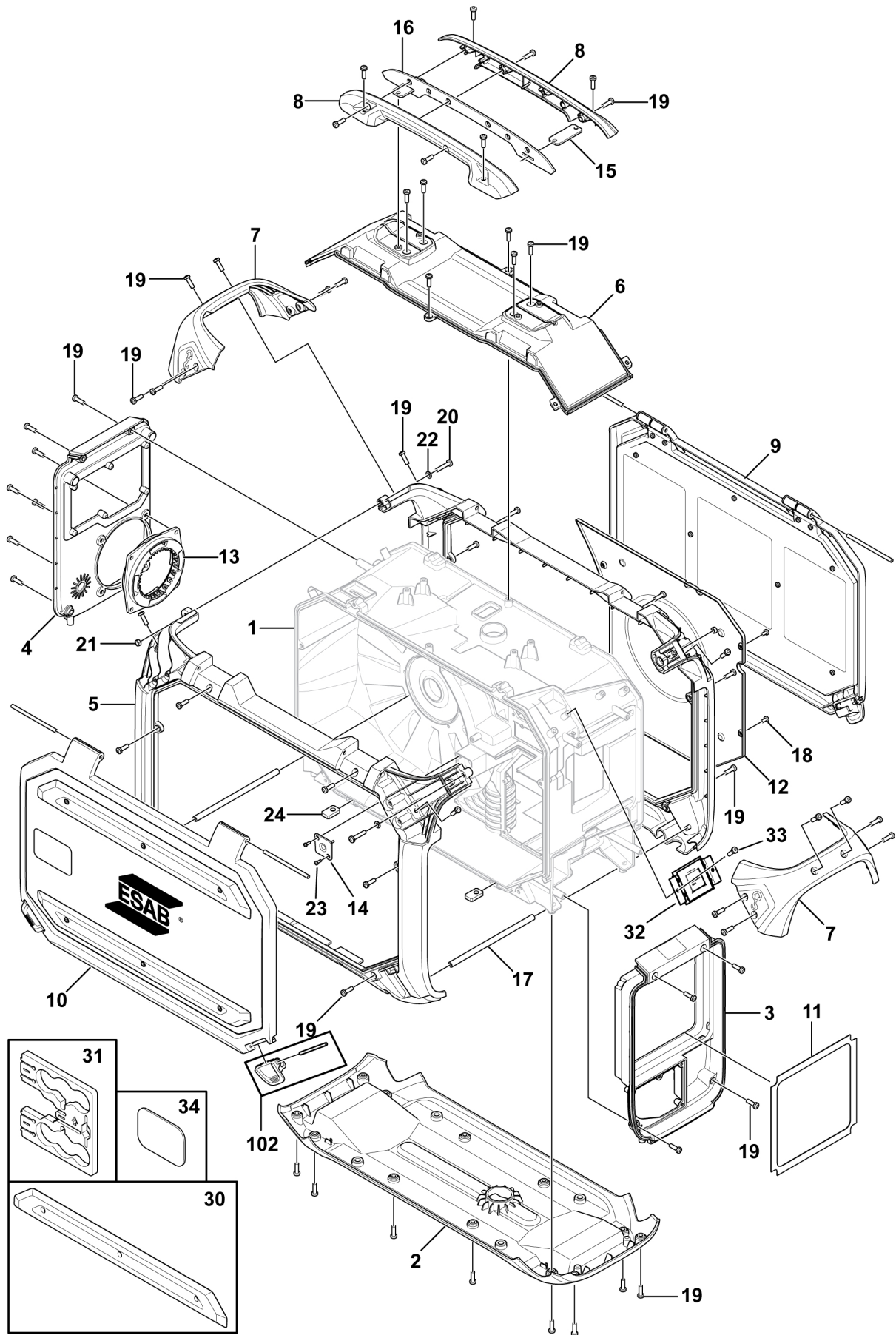
Item	Qty	Ordering no.	Denomination	Notes
1	1		Inner frame	
2	1	0445 763 001	Bottom panel	
3	1	0445 764 001	Front panel	
4	1	0445 765 001	Rear panel	
5	2	0445 766 001	Outer Frame	
6	1	0445 767 001	Top panel	
7	2	0445 768 001	Handle Cover	
8	2		Top Handle	See item 101
9	1	0445 780 880	Door Complete Right	Including item 102
10	1	0464 694 880	Door left	The doors are supplied with item 102. The doors are supplied without internal decals. See item 103 for internal decals
11	1	0446 035 001	Gasket UI	
12	1	0446 005 001	Cover Panel	
13	1	0445 810 001	Strain relief inner part	
14	1	0445 777 001	Inductor Cover	
15	2		Handle bracket	See item 101
16	1		Top Handle Frame	See item 101
17	2		Hose red PVC	ØD=9 mm, ID=5 mm
18	4		Screw	MRT M4×8 black
19	67		Screw	Remform torx 5×16 black. See item 101
20	2		Screw	MRT M5×25
21	4		Nut	6K Steel 8.8 M5
22	4		Plain washer	5-200 HV-A2K
23	2	0194 153 222	Screw	Remform torx 3×8
24	4	0446 011 001	Rectangular nut	M8
26	1	0445 883 001	Warning + connectors with water	
27	1	0445 880 001	RFID Decal	
28	1	0445 786 001	Side decal right	
29	1	0445 786 003	Side decal left	
30	4	0445 782 001	Bumper	
31	1	0446 034 001	RF300 S + W parts storage foam	

SPARE PARTS

Item	Qty	Ordering no.	Denomination	Notes
32	1	0446 851 880	NFC complete assembly	
33	2		Screw	Remform torx 4x12 Black
34	1	0445 832 001	Spool window	

Item	Ordering no.	Denomination	Notes
101	0464 667 885	Top handle and frame kit	Including items 8 (2 pcs), 15 (2 pcs), 16 and 19 (8 pcs)
102	0464 663 079	Door lock kit	Including pin (1 pc) and door lock (1 pc)
103	0446 984 880	Decal kit Edge	





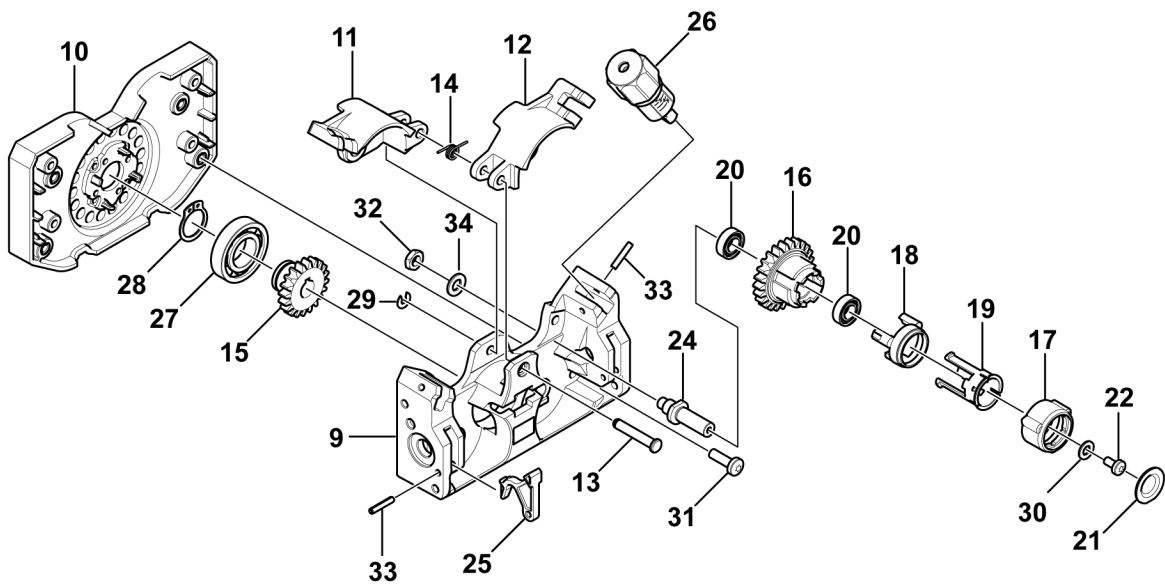
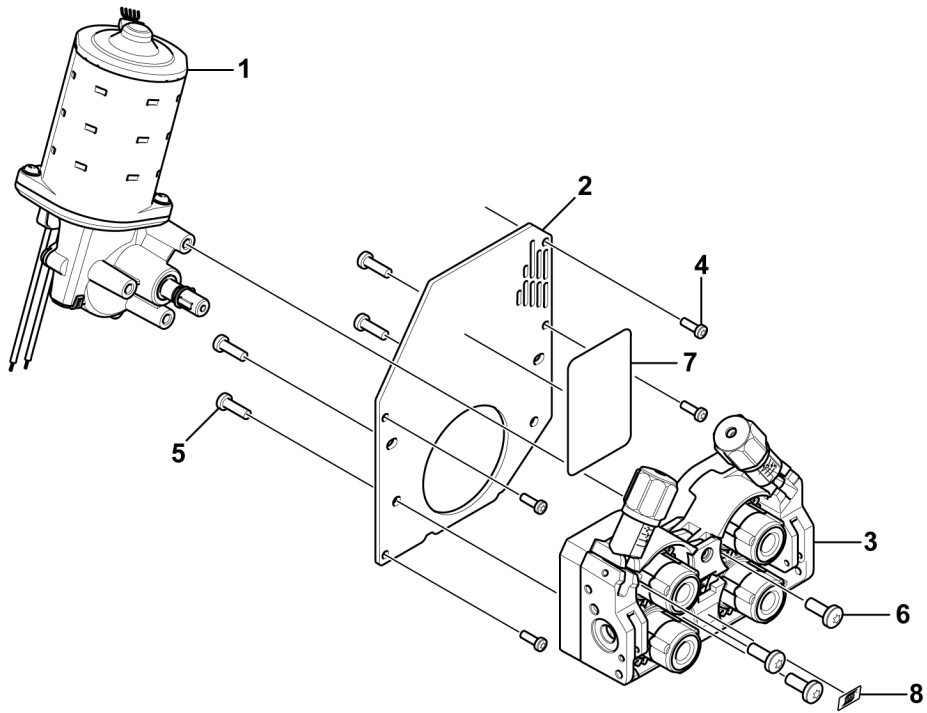
Feeder mechanism module

C = Component designation in the circuit diagram					
Item	Qty	Ordering no.	Denomination	Notes	C
1	1	0465 827 880	Drive unit		
2	1	0446 010 001	Adaptor plate		
3	1		Feeder mechanism 37 complete	See item 204	
4	4	0194 153 292	Screw	Remform torx 4×12 black	
5	4	0194 153 330	Screw	Remform torx 5×16 black	
6	3		Screw	MRT M6×16	
7	1		Warning decal pinching		
8	1	0445 916 001	ESAB logo silver		
9	1		Front plate	See item 204	
10	1		Back plate	See item 204	
11	1	0445 818 002	Swing arm left	See item 204	
12	1	0445 818 001	Swing arm right	See item 204	
13	1		Swing arm Shaft	See items 202 and 204	
14	1		Lift spring	See items 202 and 204	
15	1	0445 820 001	Motor pinion	See items 203 and 204	
16	4		Gear hub complete	See item 203	
17	4		Bezel	See item 203	
18	4		Driver	See item 203	
19	4		Retainer	See item 203	
20	8		Bearing	8×16×5 mm, see item 203	
21	4		Cover	See item 203	
22	4		Screw	MRT M4×8 black, see item 203	
24	4	0445 841 001	Feed roll shaft		
25	2	0446 059 001	Nozzle lever		
26	2	0445 831 880	Tensioner unit assembly		
27	1		Bearing	17×35×8 mm, see item 201	
28	1		Lock ring	d17, see item 201	
29	1		Circlip	d6/4, see item 202	
30	4		Washer	M4, see item 203	
31	4		Screw	MRT M5×16 black	
32	4	0349 312 091	Hexagon thin nut		
33	4		Spring pin	Ø3×16, see item 204	
34	4		Cup spring		

SPARE PARTS

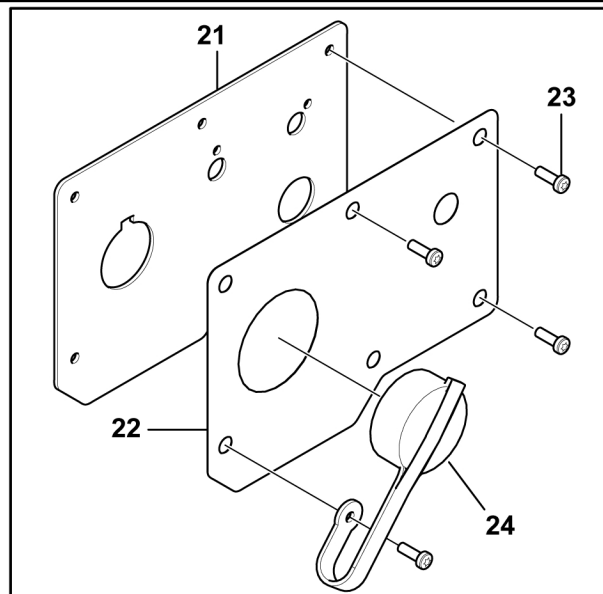
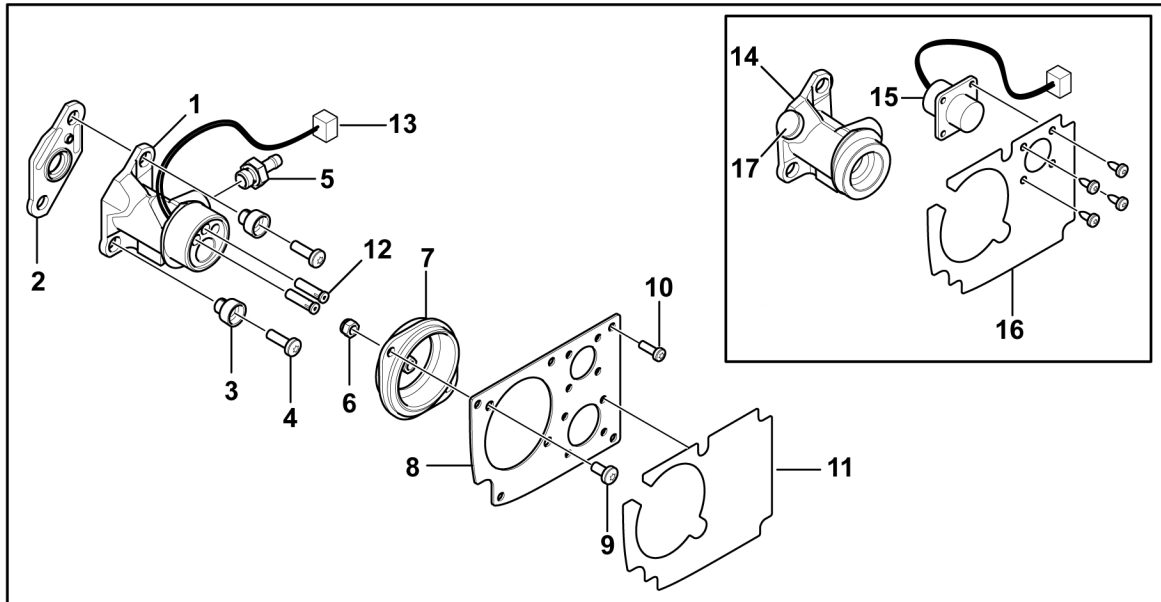
Item	Ordering no.	Denomination	Notes
201	0464 667 883	Bearing and lock ring kit	Including items 27 and 28
202	0464 667 887	Swing arm shaft kit	Including items 13, 14 and 29
203	0464 667 893	Gear hub complete kit	Including items 15–22 and 30
204	0464 667 886	Feeder mechanism kit	Including items 9–15 and 33

For feeder mechanism wear parts, see Section 1.8 "WEAR PARTS", page 20.



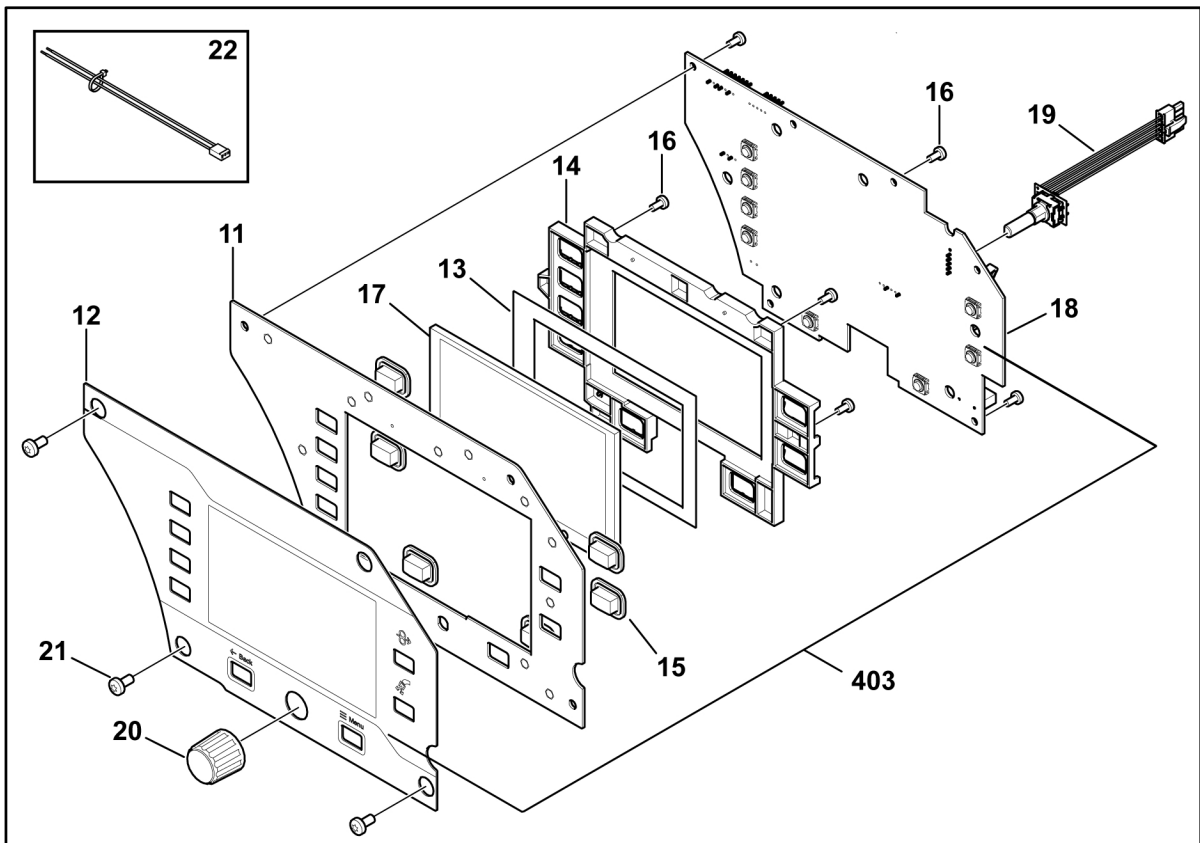
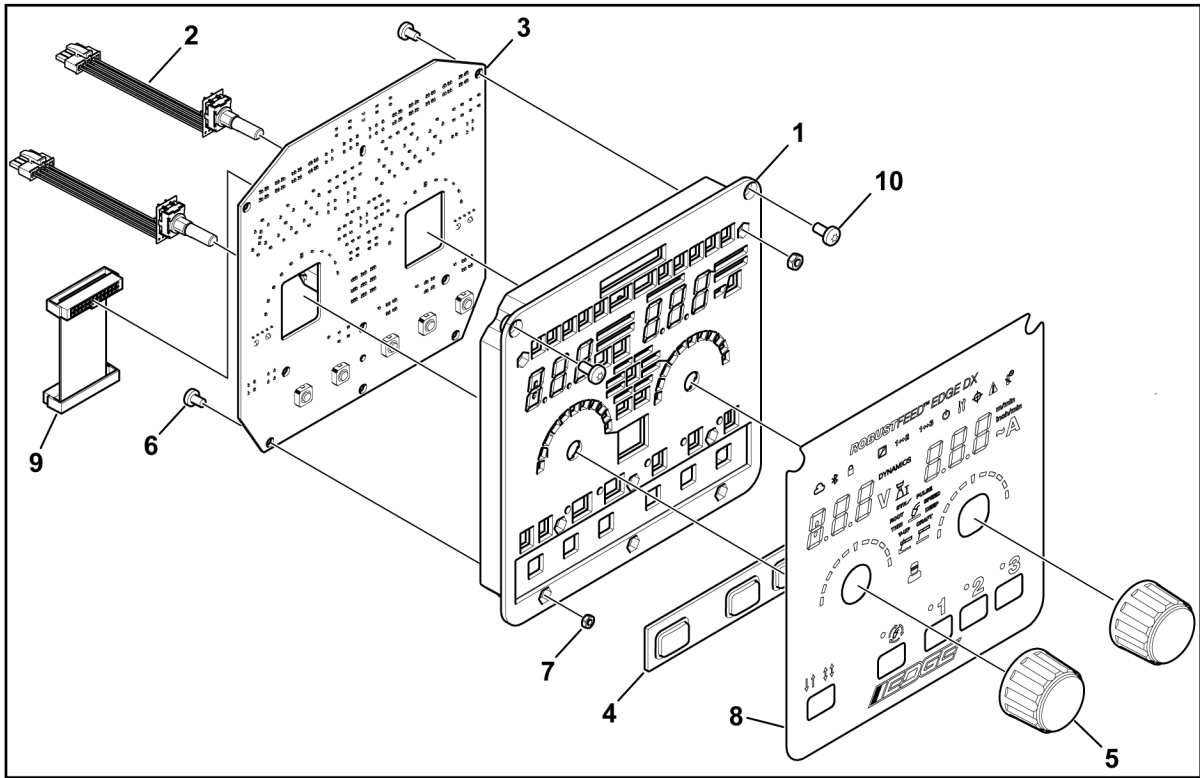
Front and rear interface module

C = Component designation in the circuit diagram					
Item	Qty	Ordering no.	Denomination	Notes	C
Front interface module:					
1	1		Euro connector	See item 301	
2	1		Torch connector insulator	See item 301 and 302	
3	2		Screw insulator	See item 301 and 302	
4	2		Screw	MRT M5x16. See item 302	
5	1	0445 856 001	Brass fitting		
6	2		Locknut	M5	
7	1		Torch connector seat	See item 301 and 302	
8	1	0446 003 886	Interface plate front		
9	2		Screw	MRT M5x10	
10	5	0194 153 292	Screw	Remform Torx 4x12 black	
11	1	0445 882 001	Front Overlay Euro	Without remote connection	
12	2	0368 750 001	Insulating sleeve	See item 301	
13	1	0446 020 880	Trigger cable harness	See item 301	
14	1		Tweco 4 connector	Only for Tweco. See item 302	
15	1	0446 020 881	Trigger cable harness	Only for Tweco	
16	1	0445 882 003	Front overlay, Tweco	Without remote connection	
17	1	0446 026 001	Thump screw	Only for Tweco	
Rear interface module:					
21	1	0446 004 002	Interface plate rear		
22	1	0445 881 001	Rear Plate overlay	Without heat kit and MMA	
		0445 881 007	Rear Plate overlay	With heat kit and MMA	
		0445 881 006	Rear Plate overlay	With heat kit and without MMA	
23	6	0194 153 292	Screw	Remform Torx 4x12	
24	1	0446 232 001	OKC protection cap	With MMA	
Item		Ordering no.	Denomination	Notes	
301		0464 667 884	Euro torch connector kit	Including items 1, 2, 3, 7, 12 and 13	
302		0464 667 899	Tweco 4 torch connector kit	Including items 2, 3, 4, 7 and 14	



Control panels

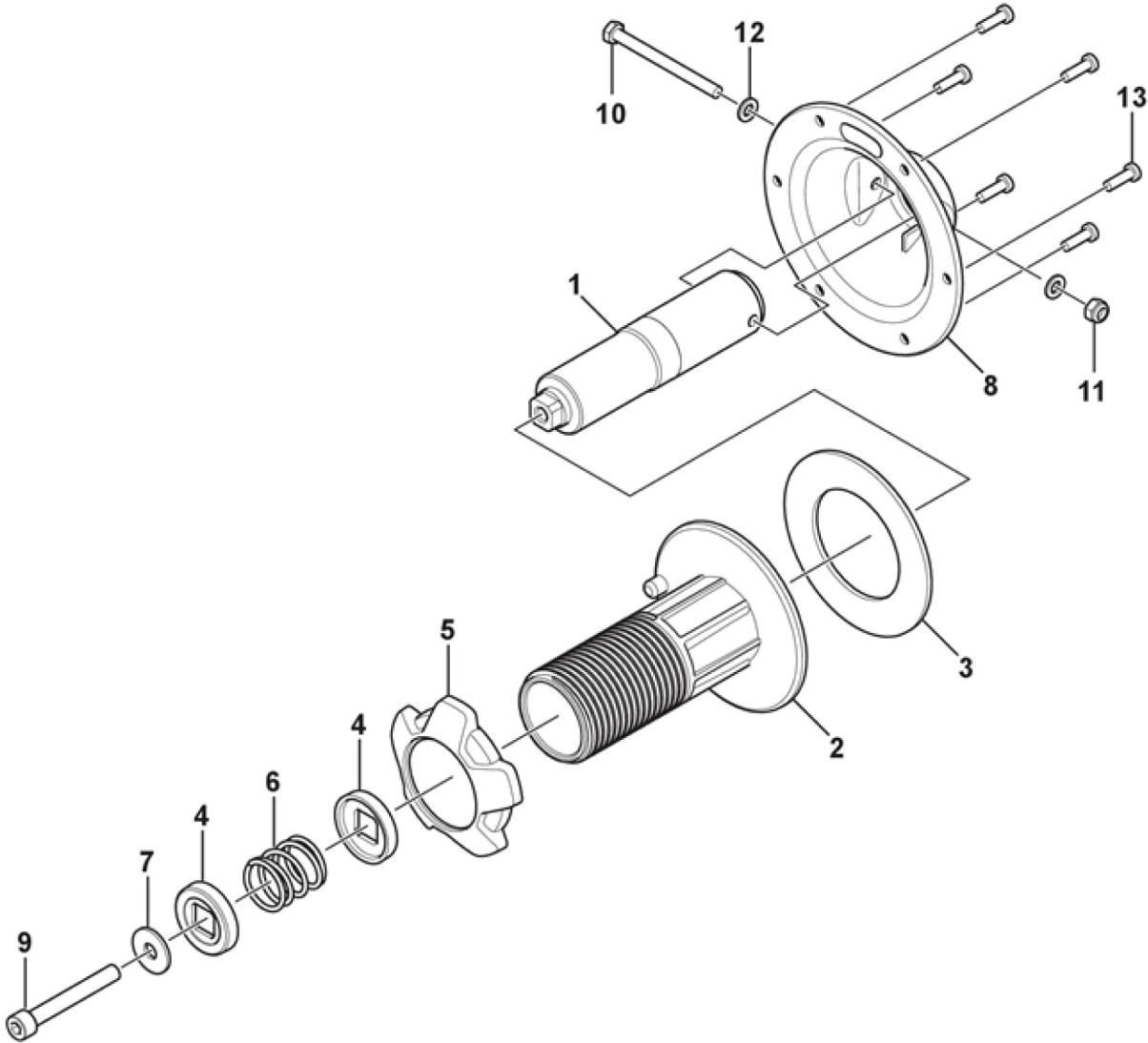
C = Component designation in the circuit diagram					
Item	Qty	Ordering no.	Denomination	Notes	C
External control panel module:					
1	1		Frame external User Interface	See item 401 and 402	
2	2	0446 612 882	Encoder complete	See item 402	
3	1	0440 384 880	External HMI PCBA	See item 402	13AP5
4	1		5 button keypad	See item 401 and 402	
5	2	0321 475 893	Knob	D36-1/4IN. See item 402	
6	8		Screw	MRT M4×6 black. See item 402	
7	8		Nut	6K STEEL 8.8 M4. See item 401 and 402	
8	1		RF Edge External UI Overlay	See item 401 and 402	
9	1	0193 700 709	Ribbon cable with connectors	See item 402	
10	2		Screw	MRT M4×8 black. See item 401 and 402	
Internal control panel module:					
11	1		Metal frame	See item 403	
12	1		Internal Panel GUI Overlay	See item 403	
13	1		Double Side tape	See item 403	
14	1		Display holder	See item 403	
15	8		Rubber Button	See item 403	
16	12		Screw	MRT M3×6. See item 403	
17	1		5 inch LCD display	See item 403	
18	1		Internal panel PCBA	See item 403	13AP6
19	1	0446 612 882	Encoder complete		
20	1	0321 475 892	Knob	D36-1/4IN	
21	4		Screw	Remform Torx 4×12 black	
22	1	0446 613 880	Inner HMI supply harness		
Item	Ordering no.	Denomination	Notes		
401	0464 739 880	External frame Kit	Including items 1, 4, 7, 8 and 10		
402	0464 744 880	External UI Kit	Including items 1 - 10		
403	0446 607 880	Internal UI Kit	Including items 11 - 18		



Bobbin holder

C = Component designation in the circuit diagram					
Item	Qty	Ordering no.	Denomination	Notes	C
1	1		Brake hub axle	See item 501	
2	1	0445 794 001	Brake hub sleeve		
3	1	0445 613 001	Brake hub friction pad	See item 501. Tape included	
4	2		Brake hub spring seat	See item 502	
5	1	0445 779 001	Brake hub nut		
6	1		Brake hub spring	See item 502	
7	1		Washer	RB 24×8.4×2. See item 502	
8	1	0446 006 001	RF300 bobbin console		
9	1		Screw	MC6S M8×60. See item 502	
10	1		Screw	M6S M6×70. See item 501	
11	1		Nut	LOC-KING 6 BH6. See item 501	
12	2		Washer	BRB D12/6.4×1.5	
13	6	0194 153 330	Screw	Remform torx 5×16	

Item	Ordering no.	Denomination	Notes
501	0464 667 881	Brake hub axle kit	Including items 1, 3, 10 and 11
502	0464 667 882	Brake hub spring seat kit	Including items 4, 6, 7 and 9



Water, gas and heat kit modules

Item	Qty	Ordering no.	Denomination	Notes
Water Module				
1	1	0445 778 003	Water outlet overlay with water ELP	
2	2	0445 745 003	Quick connector brass	
3	2	0445 746 001	Brass fitting	
4	2	0446 967 002	Quick connector	3/16
5	0.33 m	0457 290 033	Hose	D5×1,5MM PCV Blue
6	0.36 m	0349 487 059	Hose	L=100 m red
7	4	0368 978 005	Hose clamp 10.0/9.5	
8	1	0458 364 001	Micro switch mech control	2/4
9	1	0458 365 001	Spring	
10	1	0458 366 001	Water lock cam	
11	1	0458 367 001	Water lock bushing	
12	1	0458 368 001	Water outlet	
13	1		Screw	IN6 8,8 M5×35
14	1		Washer	D16/5×1 Origmag
15	1		Nut	LOC-KING 5 BH6
16	2		Screw	MRT M3×16 black
17	2		Washer	BRB D6/3,2×0.5
18	2		Nut	6K steel 8,8 M3
Heater Module				
20	4	0194 153 222	Screw	Remform torx 3×8. See item 704
21	1		Heat kit cable harness	See item 704
22	1	0446 091 001	Knob	See item 704
23	1		Warning sticker	See item 704
24	1		AVF cable harness	See item 704
25	1		Heater plate	See item 704
26	1		Heater	Including mounting screws. See item 704
No Gas Module				
40	4		Hose clamp	See Item 703
41			Gas hose	See Item 703. In units with digital gas, 0.38 m of hose is needed. In units with no gas, 0.47 m of hose is needed.
42	4		Screw	MRT M4×8 black. 2 Qty for no gas and 4 Qty for digital gas
43	6	0194 153 292	Screw	Remform torx 4×12 black
44	1	0446 007 001	Gas adaptor plate	

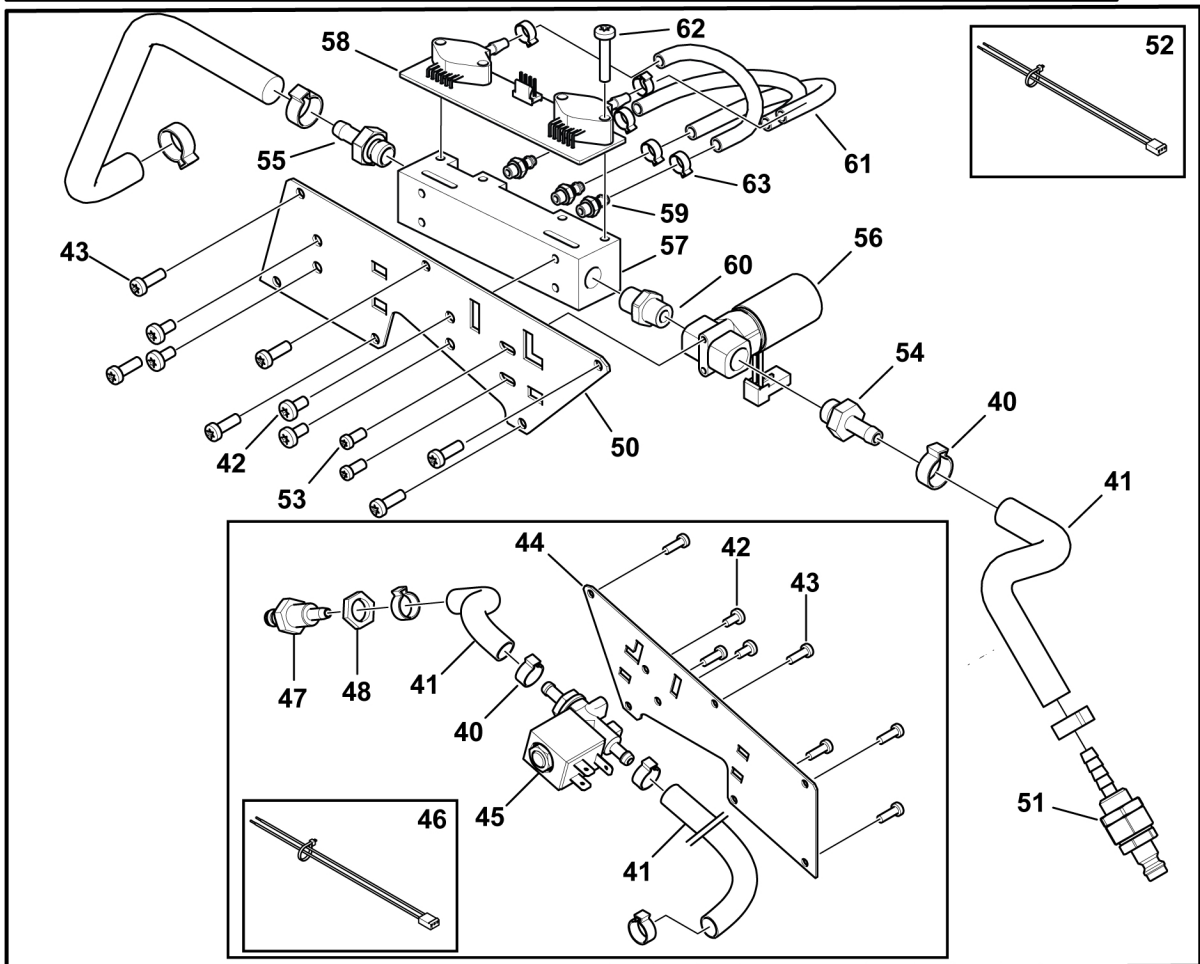
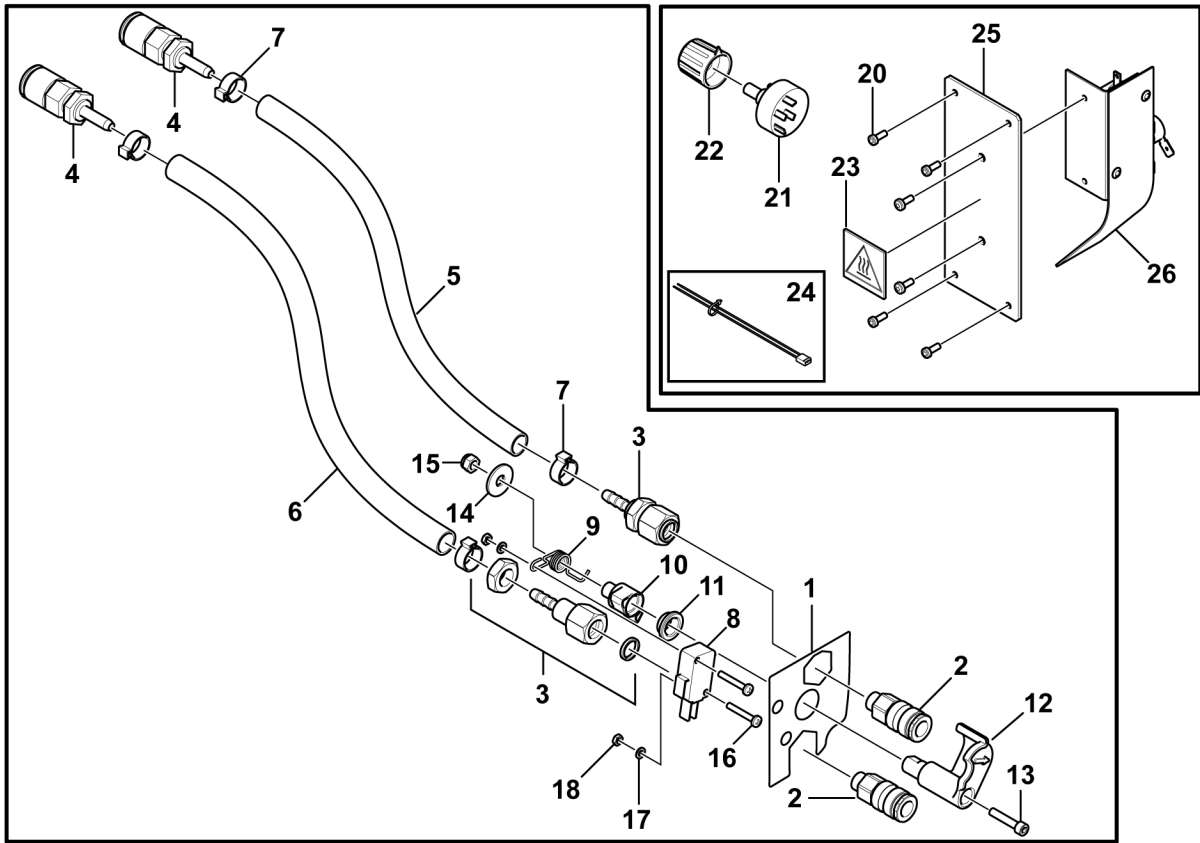
SPARE PARTS

Item	Qty	Ordering no.	Denomination	Notes
45	1	0193 054 009	Solenoid valve	
46	1	0447 375 880	Solenoid Harness	
47	1	0349 312 159	Nipple	
48	1	0457 288 015	Coupler nut	LPH35

Digital Gas Module

50	1	0446 007 002	Gas adapter plate edge	
51	1	0446 810 002	Gas filter adapter	
52	1	0446 355 880	Gas module harness	
53	2		Screw	MRT M3×6 black
54	1	0445 856 002	Brass fitting	Pre-applied with dry sealant
55	1	0445 856 001	Brass fitting	
56	1		Proportional valve complete	See Item 701 and 702
57	1		Venturi block	See Item 701
58	1		PCBA digital gas control	See Item 701. Only available as Complete Assembly Kit
59	3		Hose nipple	See Item 701
60	1		Double nipple	See Item 701 and 702
61	0.315 m		Tubing 0604	See Item 701
62	4		Screw	See Item 701
63	6		Hose clamp	See Item 701

Item	Ordering no.	Denomination	Notes
701	0464 663 102	PCBA digital gas control Kit	Including items 53-63, also includes kit 702. Pre-Assembled Kit.
702	0464 663 103	Proportional valve Kit	Including items 56 and 60. For assembly instructions, see 'Replacement instructions' in Service manual.
703	0464 663 080	Gas hose Kit	Including items 40 and 41 (0.47 m).
704	0464 663 107	Heat Kit Module Edge	Including items 20-26. For overlay, see Section 1.3 "Front and rear interface module", page 9.

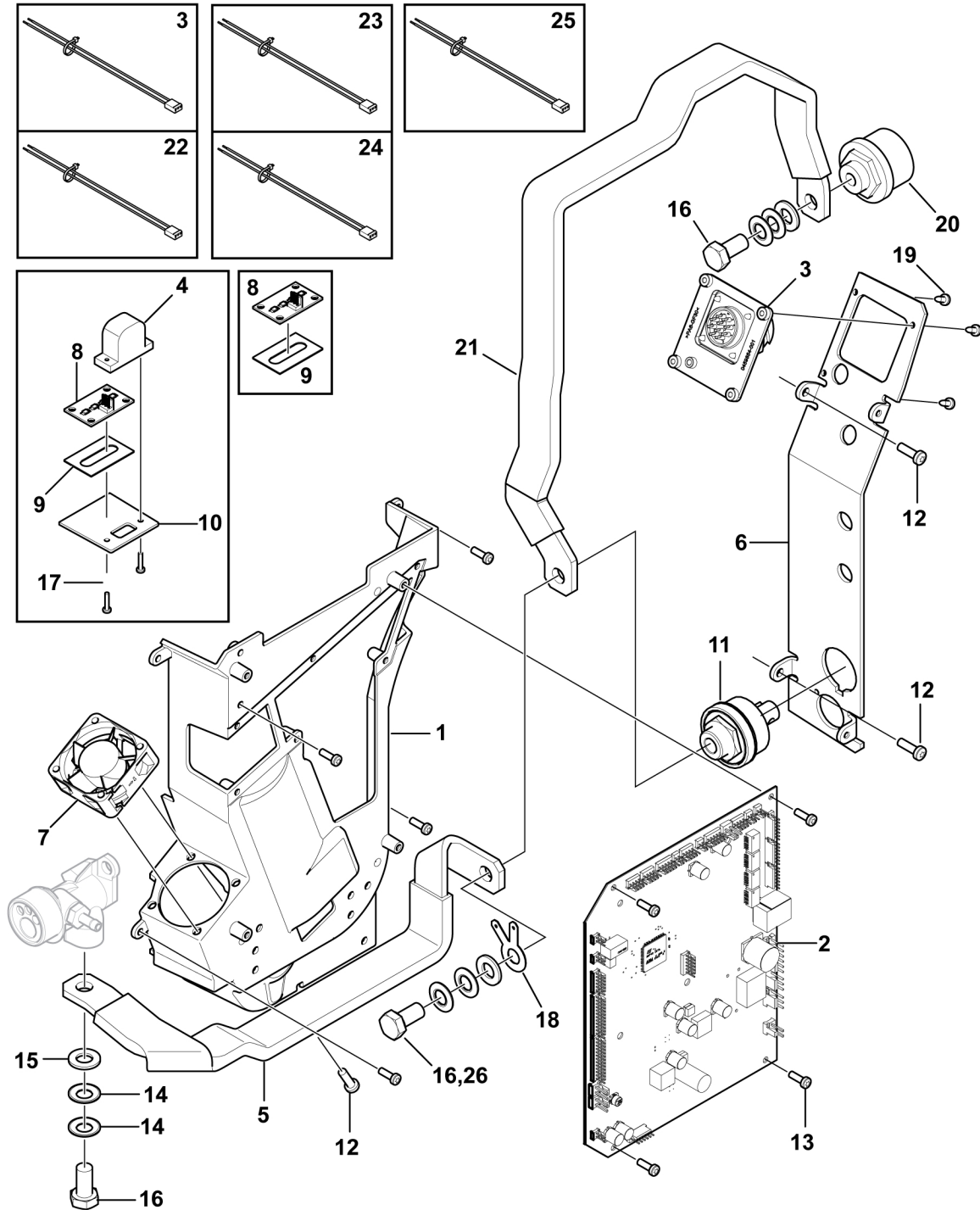


System control module

C = Component designation in the circuit diagram					
Item	Qty	Ordering no.	Denomination	Notes	C
1	1	0445 776 001	Multi Console Robust Feed 300		
2	1	0447 987 880	Control Board BX	Configured PCBA	13AP1
		0447 987 881	Control Board CX		
		0447 987 885	Control Board DX		
3	1	0446 351 880	Signal cable harness		
4	1	0445 847 882	USB complete		
5	1		Torch Copper Bar	See item 601	
6	1	0446 002 003	Interface plate internal		
7	1	0446 037 880	Fan Complete		
8	2		PCBA LED	See item 603	13AP2
9	2		PCBA LED adhesive gasket	See item 603	
10	1		Lighting Window Front	See item 603	
11	1	0160 609 881	Machine connector		
12	4	0194 153 330	Screw	Remform Torx 5×16 black	
13	8	0194 153 292	Screw	Remform Torx 4×12 black	
14	6		Cup Spring	See items 601 and 602	
15	3		Washer	10,5 A2K. See items 601 and 602	
16	2		Screw	M6S 10×20. See items 601 and 602	
17	2		Screw	MRT M2,5×12	
18	1		Flat pin connector		
19	4		Cross recessed head tapping screw		
20	1	0160 362 881	OKC Machine contact	50 mm ² with MMA.	
21	1		OKC copper bar	See item 602	
22	1	0446 821 880	Mechanism LED harness		
23	1	0446 251 880	Proximity sensor harness		
24	2	0446 068 880	Rear Led Cable harness		
25	1	0446 845 880	ELP Harness		
26	1	0349 481 132	Screw	M6S 10×25. With MMA. See item 602	
27	1		HOLDERS self-adhesive	Used to route the Pos 3. Not illustrated	
28	1		Cable binders	460177. Used to route the Pos 3. Not illustrated	



SPARE PARTS

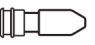
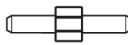

Item	Ordering no.	Denomination	Notes
601	0464 667 888	Torch copper bar kit	Including items 5, 14, 15 and 16
602	0464 680 883	OKC copper bar kit	Including items 14, 15, 16, 21 and 26. With MMA
603	0464 680 886	LED illumination circuit board kit	Including items 8 (2 pcs), 9 (2 pcs) and 10





WEAR PARTS

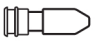
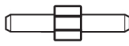

Fe, Ss and cored wire

Wire diameter (in.) (mm)	.023 0.6	.030 0.8	.040 0.9/1.0	.045 1.2	.052 1.4	1/16 1.6	.070 1.8	5/64 2.0	 Feed roller
V-groove 	X	X							0445 850 001
		X	X						0445 850 002
			X						0445 850 003
			X	X					0445 850 004
				X					0445 850 005
					X	X			0445 850 006
								X	0445 850 007

Inlet wire guide 	Middle wire guide 	Outlet wire guide 
0445 822 001 (2 mm)	0446 080 882	0445 830 883 (Tweco) 0445 830 881 (Euro)



Cored wire – Different wire guides dependent on wire diameter!

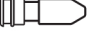


Wire diameter (in.) (mm)	.040 0.9/1.0	.045 1.2	.052 1.4	1/16 1.6	.070 1.8	5/64 2.0	3/32 2.4	 Feed roller
V-K-knurled 	X	X						0445 850 030
		X						0445 850 031
		X	X					0445 850 032
					X			0445 850 033
						X		0445 850 034
							X	0445 850 035
								X

	Inlet wire guide 	Middle wire guide 	Outlet wire guide 
Wire diameter 0.040–1/16 in. 0.9–1.6 mm	0445 822 001 (2 mm)	0446 080 882	0445 830 883 (Tweco) 0445 830 881 (Euro)
Wire diameter 0.070–3/32 in. 1.8–2.4 mm	0445 822 002 (3 mm)	0446 080 883	0445 830 884 (Tweco) 0445 830 882 (Euro)

SPARE PARTS

Al wire

Wire diameter (in.) (mm)	.023 0.6	.030 0.8	.040 0.9/1.0	.045 1.2	.052 1.4	1/16 1.6	.070 1.8	 Feed roller
U-groove 		X	X					0445 850 050
			X	X				0445 850 051
				X		X		0445 850 052

Inlet wire guide 	Middle wire guide 	Outlet wire guide 
0445 822 001 (2 mm)	0446 080 881	0445 830 886 (Tweco)
		0445 830 885 (Euro)



A WORLD OF PRODUCTS AND SOLUTIONS.



For contact information visit <http://esab.com>

ESAB AB, Lindholmsallén 9, Box 8004, 402 77 Gothenburg, Sweden, Phone +46 (0) 31 50 90 00

manuals.esab.com

